

Supplementary Table 1: Sub-analysis of patients operated between 2017 and 2023

Characteristic, complication, or reintervention	Number of patients (%) or Median (IQR)	Days postoperatively, Median (IQR) ††
Patient characteristics		
Number of patients	33 (100)	-
Gender *		
Male	17 (52)	-
Female	16 (49)	-
Age at surgery (years)	55 (51-66)	-
Preoperative Body Mass Index in (kg/m²)	25 (23-28)	-
Smoking status		
Never	7 (21)	-
Active at surgery or prior use	26 (79)	-
Overconsumption of alcohol	4 (12)	-
Preoperative CCI		
CCI 0-1	1 (3)	-
CCI 2	19 (58)	-
CCI 3	8 (24)	-
CCI 4-6	5 (15)	-
Preoperative ASA score		
ASA 1	2 (6)	-
ASA 2	23 (69)	-
ASA 3	8 (24)	-
Preoperative morbidity		
Chronic hypertension	10 (30)	-
Diabetes mellitus	4 (12)	-
Chemotherapy	7 (26)	-
Prior pelvic radiation therapy	3 (9)	-
Prior abdominal surgery	8 (24)	-
Preoperative eGFR (mL/min per 1.73m²)	88 (76-97)	
Preoperative CKD stage*		
G1-G2 (eGFR ≥ 60 mL/min per 1.73m ²)	30 (91)	-
G3a-G3b (eGFR 59-30 mL/min per 1.73m ²)	3 (9)	-
Indication for surgery		
Urothelial cancer, highest pre-cystectomy T stage †		-
NMIBC (Ta, Tis, or T1)	18 (62)	-
MIBC (≥T2 or Tx)	11 (38)	-
Benign or non-urothelial cancer ‡	4 (12)	-
Highest post-operative urothelial pT stage †		
NMIBC (Ta, Tis, or T1)	15 (52)	-
T2	9 (31)	-
≥T3 or any N+	5 (17)	-

Length of index hospitalisation (days)	9 (5-11)	-
Functional outcomes and kidney function		
Surgical reinterventions		
First reintervention	19 (58)	374 (199-629)
Second reintervention	6 (18)	330 (223-1395)
Third reintervention	2 (6)	412
First successful CIC	33 (100)	23 (22-42)
Continence		
Achieved 3h continence	30 (91)	185 (74-229)
Any leakage at 6 months §	16 (52)	-
Any leakage at 12 months ¶	10 (37)	-
eGFR at last follow-up (mL/min per 1.73m²)	82 (66-101)	-
CKD stage at last follow-up		
G1-G2 (eGFR ≥ 60 mL/min per 1.73m ²)	27 (82)	-
G3a-G3b (eGFR 59-30 mL/min per 1.73m ²)	6 (18)	-
Late complications and reinterventions		
Clavien-Dindo 1		
Pouch Calculi diagnosis	2 (6)	331
Incisional hernia diagnosis	1 (3)	1157
Parastomal hernia diagnosis	1 (3)	1775
Upper tract Calculi diagnosis	1 (3)	1775
Fistula to functional bowel	1 (3)	535
Clavien-Dindo 2		
Recurring UTI at 1 year	9 (30)	-
Recurring UTI at 5 years #	0 (0)	-
Cancer recurrence intervention † **	6 (21)	270 (169-625)
Vitamin B12 deficiency	3 (9)	359
Bicarbonate treatment	1 (3)	1540
Clavien-Dindo 3a		
Lymphocele	0 (0)	-
Clavien-Dindo 3b		
Revision of ileal segment	4 (12)	479 (232-1029)
Stomal Stenosis	5 (15)	398 (170-510)
Incisional and parastomal hernia intervention	6 (18)	581 (445-771)
Cancer recurrence intervention †	3 (10)	469
Nephrostomy	3 (9)	99
Bowel obstruction	2 (6)	553
Ureteral Stenting	3 (3)	335
Fistula to functioning bowel	1 (3)	233
Intervention of Calculi	2 (4)	354
Ureter-pouch anastomosis stenosis	0 (0)	-
Abscess	0 (0)	-
Removal of pouch	0 (0)	-
Removal of clips	1 (2)	366
Total Complications		

Zero	10 (30)	-
One	6 (18)	-
Two	8 (24)	-
Three or more	9 (27)	-

CCI = Charlson Comorbidity Index; ASA = American Society of Anaesthesiologist physical status classification system; CKD = Chronic Kidney Disease; eGFR = estimated glomerular filtration rate; NMIBC = Non-Muscle Invasive Bladder Cancer (Ta, Tis, or T1); MIBC = Muscle Invasive Bladder Cancer (\geq T2 or Tx)

CIC = Clean Intermittent Catheterization; eGFR = estimated glomerular filtration rate; CKD = Chronic Kidney Disease
CIC = Clean Intermittent Catheterization; eGFR = estimated glomerular filtration rate; CKD = Chronic Kidney Disease
UTI = urinary tract infection

* Due to Rounding

† Out of 29 patients

‡ Including vesico-vaginal fistula, interstitial cystitis, radiation cystitis, or melanoma

§ Out of 31 patients

¶ Out of 27 patients

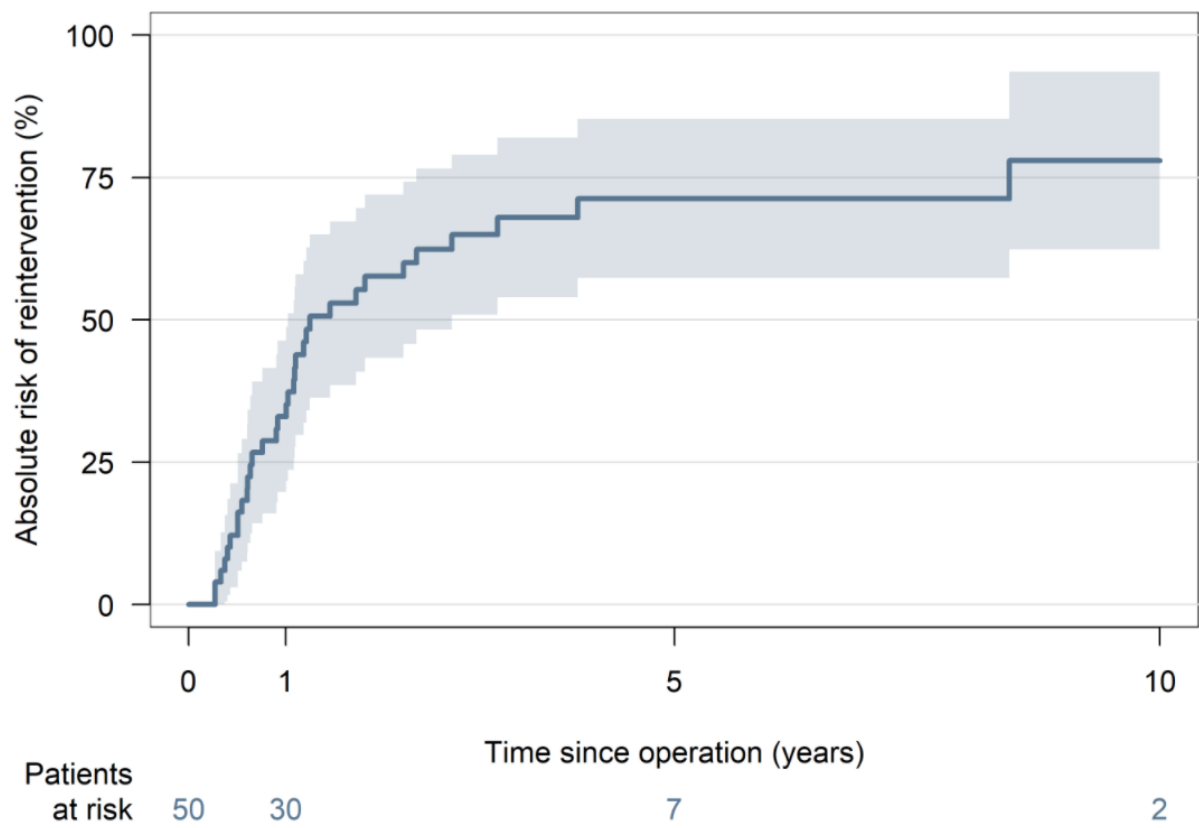
|| Out of 30 patients

Out of 12 patients

** Including chemo-, radiation- and immunotherapy

†† IQR only presented for variables with ≥ 4 observations

Supplementary figure 1



Cumulative incidence of long-term surgical reintervention